

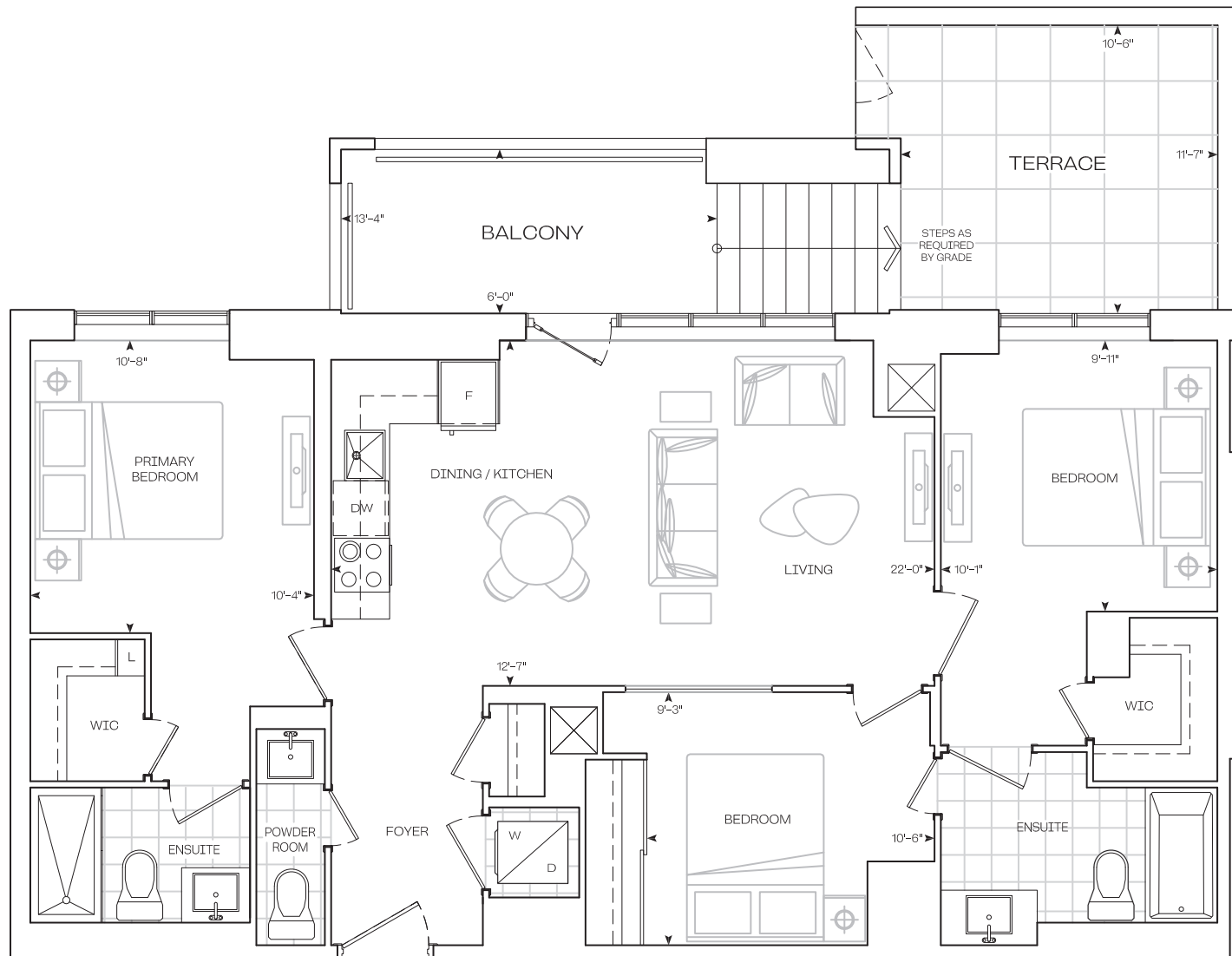
**INTERIOR**  
**1050 sq.Ft**

**EXTERIOR**  
Balcony **78 sq.Ft**  
Terrace **120 sq.Ft**

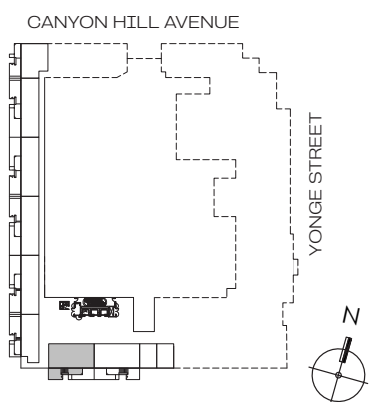
**TOTAL**  
**1248 sq.Ft**

**E 1050BF**

**3 Bedroom**  
**Barrier Free**



**Garden Series**  
**10' Ceiling - Floor 1**



Dimensions, specifications, layouts, location of materials and fixtures, tile floor and architectural detailing (including window size and location and door size, location, and swing) are approximate only and are subject to change or modifications, without notice. Actual usable floor space varies from stated floor area. Orientation of suite may be reserved, and Purchaser agrees to accept same. Balconies, terraces, and patios are exclusive, use common elements shown for display purposes only, and location and size are subject to change without notice. All illustrations are artist concept only. The provisions of Schedule "x" of the Agreement, including Section 6 and 38 apply to this Schedule. E. & O.E. (May 2024)