

# Block 56 *Glen Series*



GLEN 5C • ELEV. 1  
2,411 sq. ft.

GLEN 2 • ELEV. 1  
1,926 sq. ft.

GLEN 2 • ELEV. 1  
1,926 sq. ft.

GLEN 1 • ELEV. 1  
1,802 sq. ft.

GLEN 3E • ELEV. 1  
2,000 sq. ft.

# Block 57 *Glen Series*



GLEN 3E • ELEV. 2  
1,995 sq. ft.

GLEN 1 • ELEV. 2  
1,802 sq. ft.

GLEN 2 • ELEV. 2  
1,926 sq. ft.

GLEN 2 • ELEV. 2  
1,926 sq. ft.

GLEN 5C • ELEV. 2  
2,419 sq. ft.

# Block 66 *Glen Series*



GLEN 5C • ELEV. 1  
2,411 sq. ft.

GLEN 2 • ELEV. 1  
1,926 sq. ft.

GLEN 2 • ELEV. 1  
1,926 sq. ft.

GLEN 1 • ELEV. 1  
1,802 sq. ft.

GLEN 3E • ELEV. 1  
2,000 sq. ft.

# Block 67 *Glen Series*



GLEN 3E • ELEV. 2  
1,995 sq. ft.

GLEN 1 • ELEV. 2  
1,802 sq. ft.

GLEN 2 • ELEV. 2  
1,926 sq. ft.

GLEN 2 • ELEV. 2  
1,926 sq. ft.

GLEN 5C • ELEV. 2  
2,419 sq. ft.

# Block 70 REAR *Glen Series*



|                                    |                                   |                                   |                                   |                                   |                                   |                                    |
|------------------------------------|-----------------------------------|-----------------------------------|-----------------------------------|-----------------------------------|-----------------------------------|------------------------------------|
| GLEN 6E • ELEV. 2<br>2,143 sq. ft. | GLEN 6 • ELEV. 1<br>2,118 sq. ft. | GLEN 6 • ELEV. 2<br>2,121 sq. ft. | GLEN 6 • ELEV. 1<br>2,118 sq. ft. | GLEN 6 • ELEV. 2<br>2,121 sq. ft. | GLEN 6 • ELEV. 1<br>2,118 sq. ft. | GLEN 6E • ELEV. 1<br>2,143 sq. ft. |
|------------------------------------|-----------------------------------|-----------------------------------|-----------------------------------|-----------------------------------|-----------------------------------|------------------------------------|



Orientation of home may be reversed and purchaser agrees to accept the same. Steps and porches may vary at any exterior entrance ways due to grading variance. Actual usable floor space may vary from the stated floor areas. All renderings are artist's concept. Dimensions, specifications and architectural detailing subject to modifications. Roofline and adjoining model types may vary due to siting. E. O. E. February 2026

# Block 70 FRONT *Glen Series*

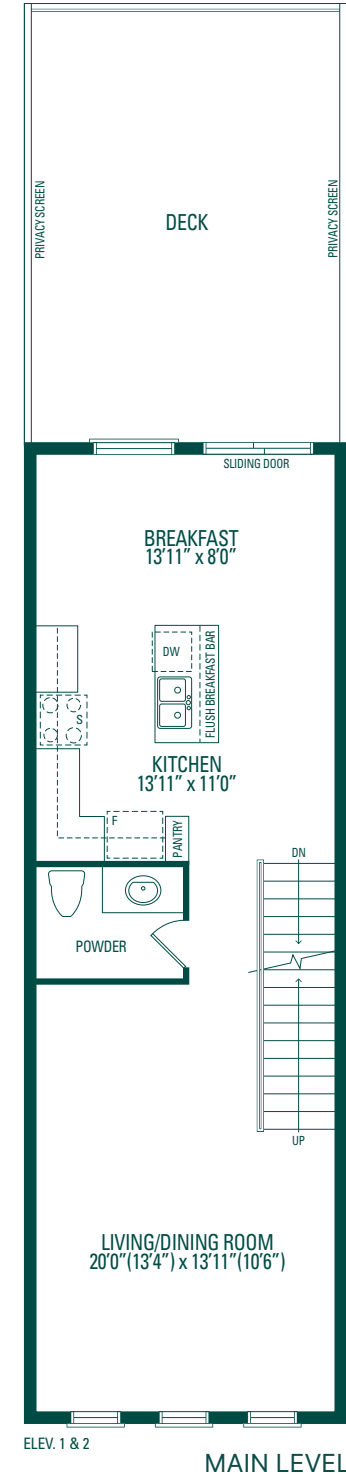
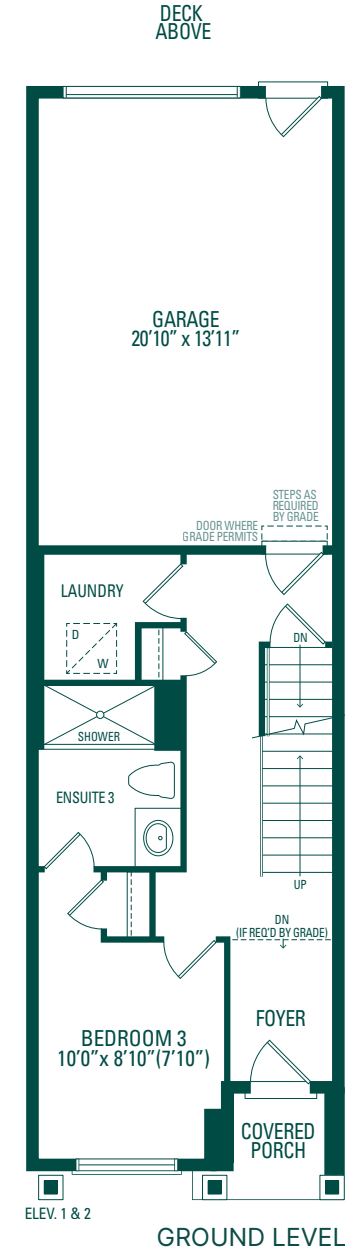
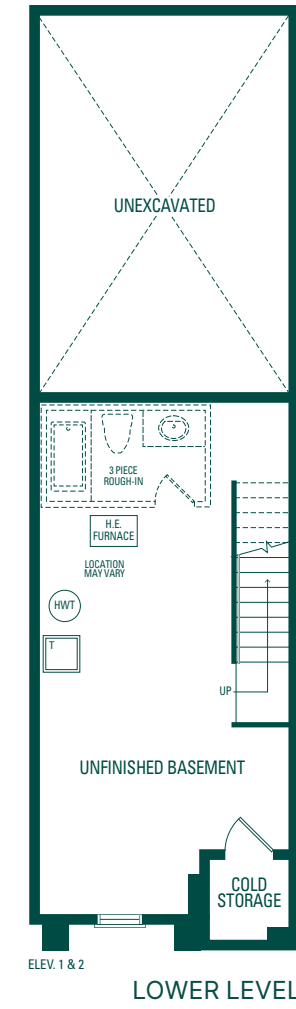


|                                    |                                   |                                   |                                   |                                   |                                   |                                    |
|------------------------------------|-----------------------------------|-----------------------------------|-----------------------------------|-----------------------------------|-----------------------------------|------------------------------------|
| GLEN 6E • ELEV. 1<br>2,143 sq. ft. | GLEN 6 • ELEV. 1<br>2,118 sq. ft. | GLEN 6 • ELEV. 2<br>2,121 sq. ft. | GLEN 6 • ELEV. 1<br>2,118 sq. ft. | GLEN 6 • ELEV. 2<br>2,121 sq. ft. | GLEN 6 • ELEV. 1<br>2,118 sq. ft. | GLEN 6E • ELEV. 2<br>2,143 sq. ft. |
|------------------------------------|-----------------------------------|-----------------------------------|-----------------------------------|-----------------------------------|-----------------------------------|------------------------------------|



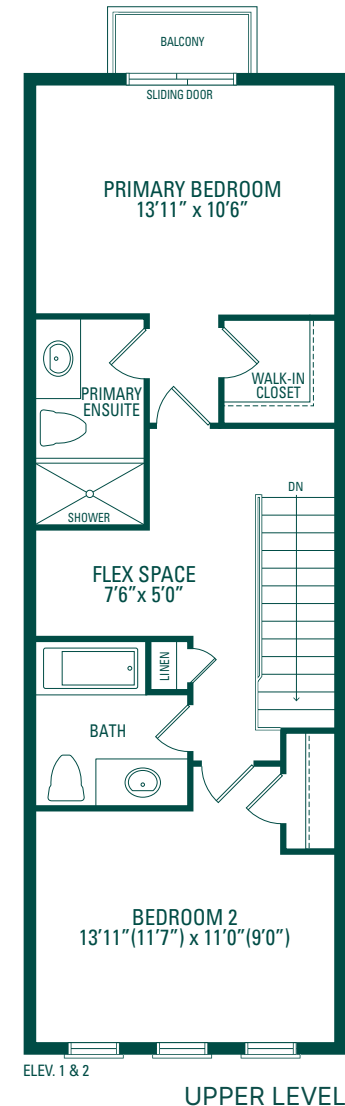
Orientation of home may be reversed and purchaser agrees to accept the same. Steps and porches may vary at any exterior entrance ways due to grading variance. Actual usable floor space may vary from the stated floor areas. All renderings are artist's concept. Dimensions, specifications and architectural detailing subject to modifications. Roofline and adjoining model types may vary due to siting. E. O. E. February 2026

# Glen 1

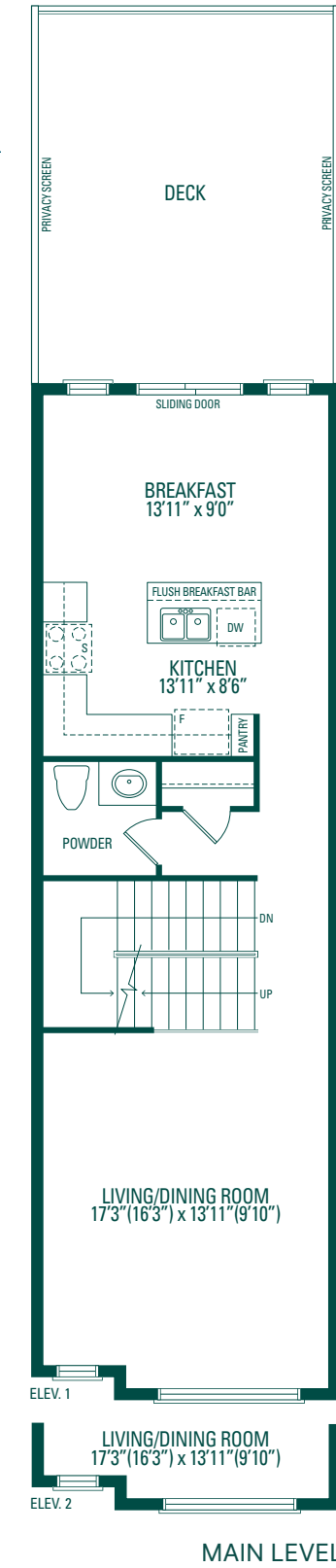
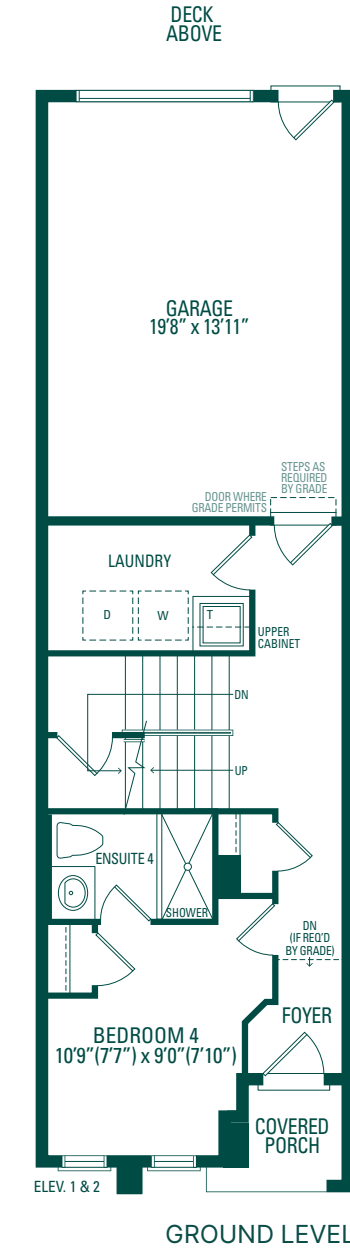
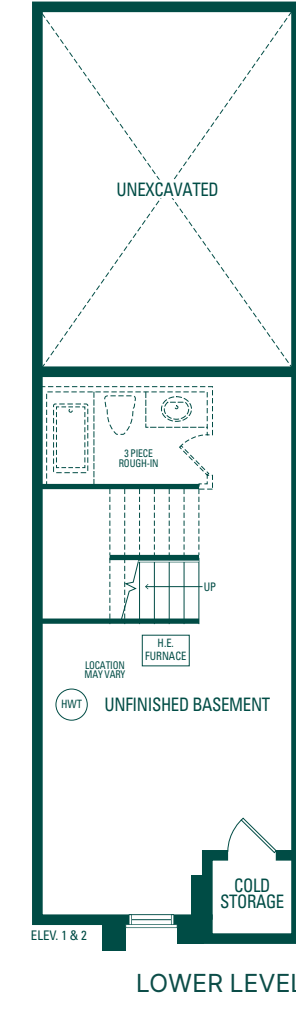


ELEV. 1  
1,802 sq. ft.

ELEV. 2  
1,802 sq. ft.

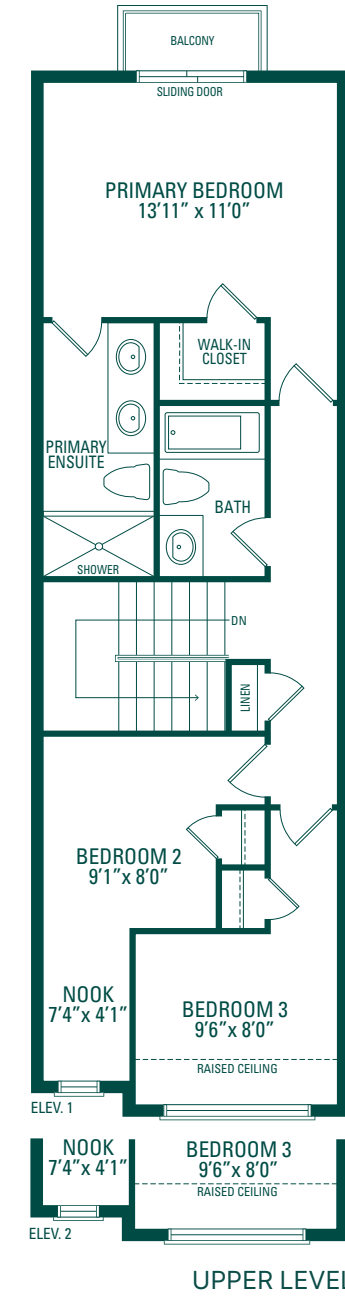


# Glen 2

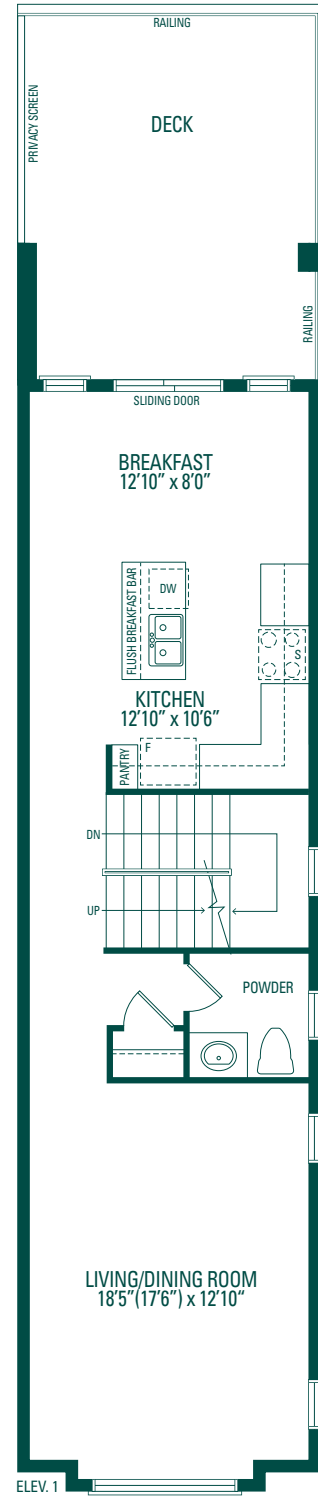
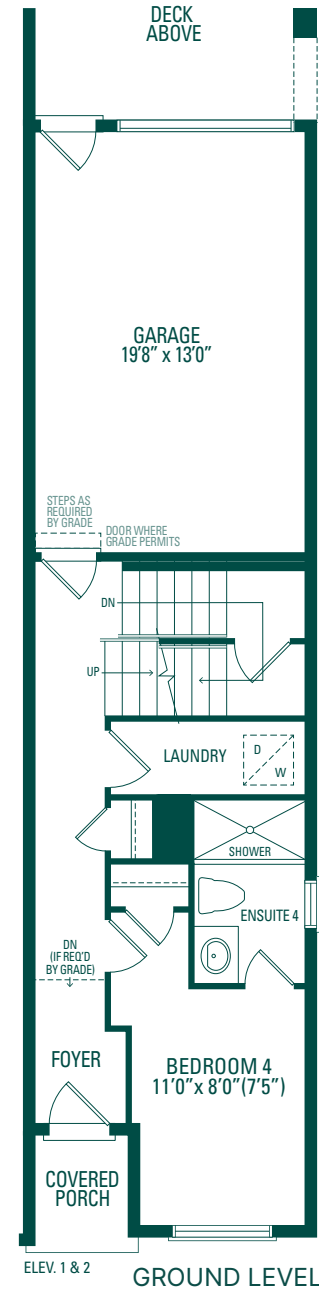
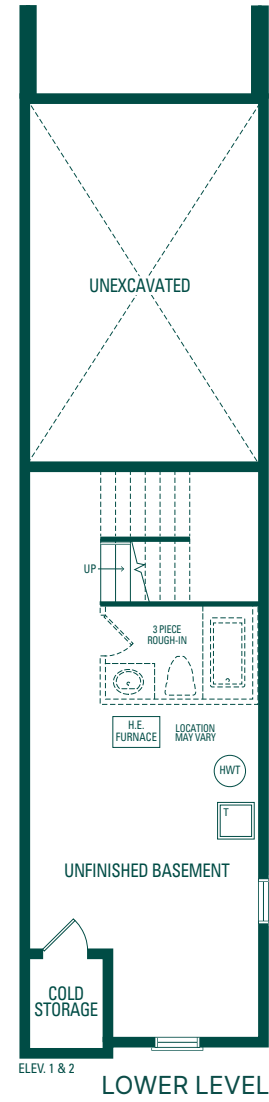


ELEV. 1  
1,926 sq. ft.

ELEV. 2  
1,926 sq. ft.

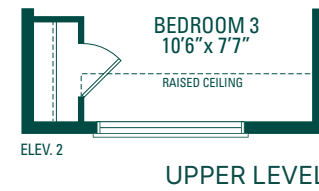
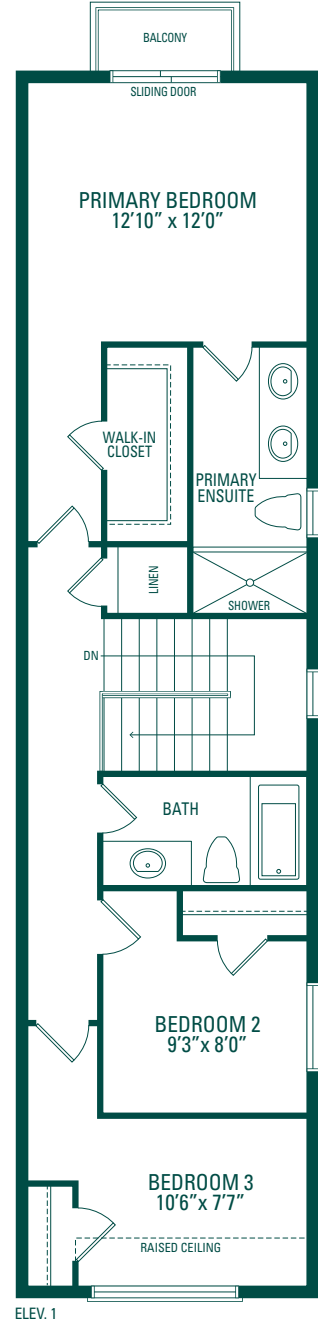


# Glen 3E

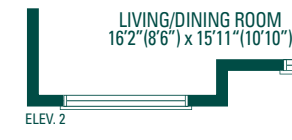
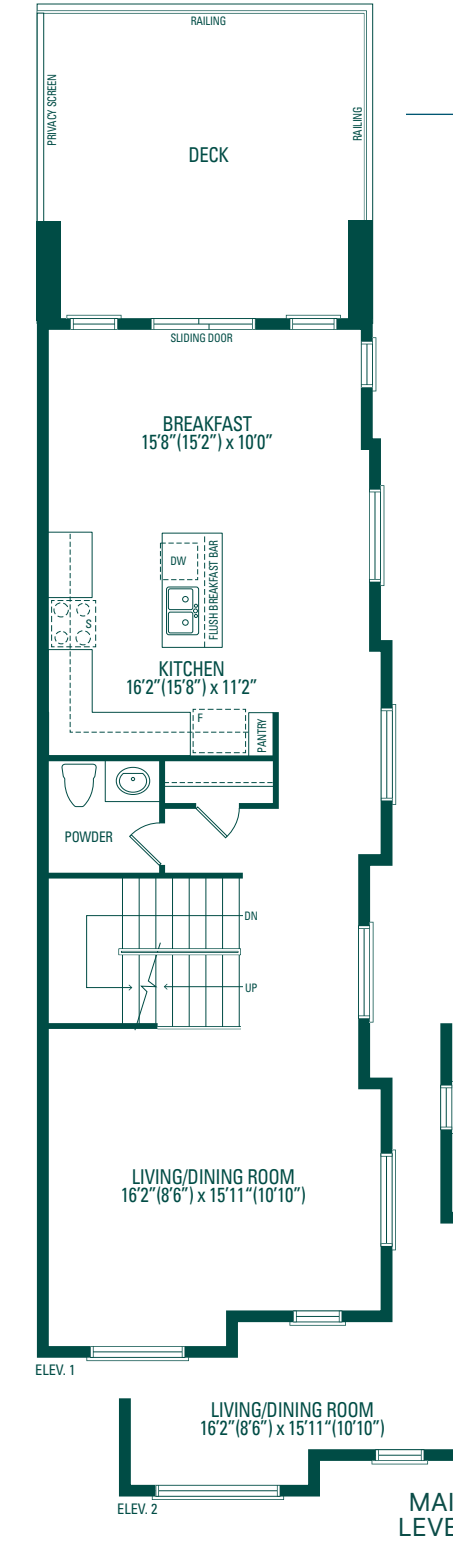
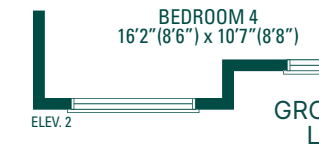
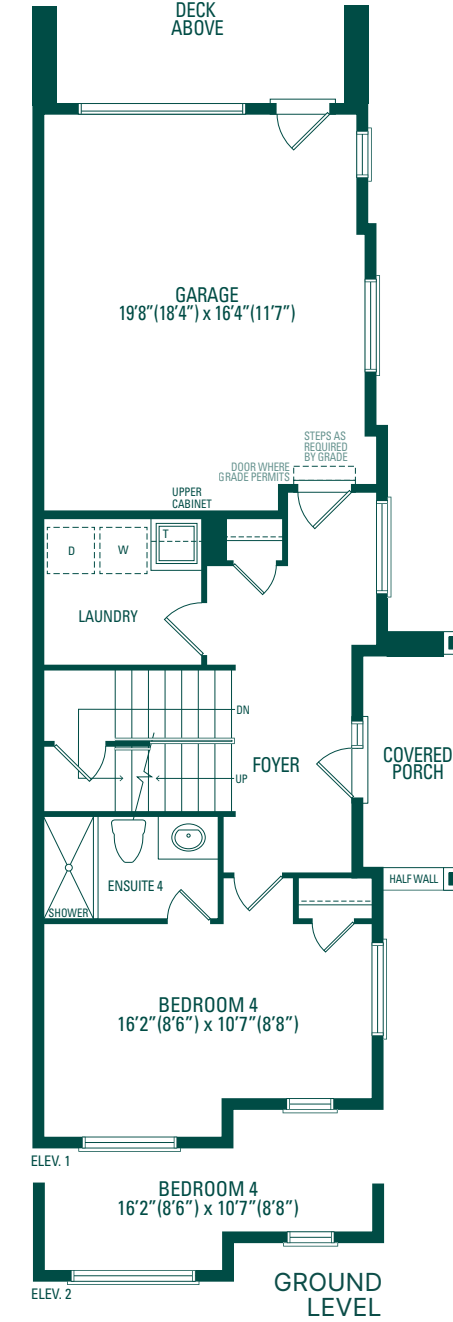
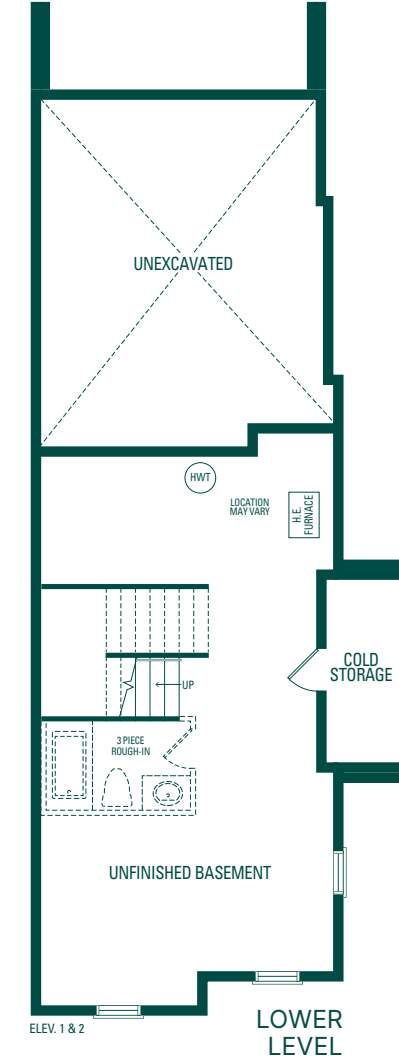


ELEV. 1  
2,000 sq. ft.

ELEV. 2  
1,995 sq. ft.

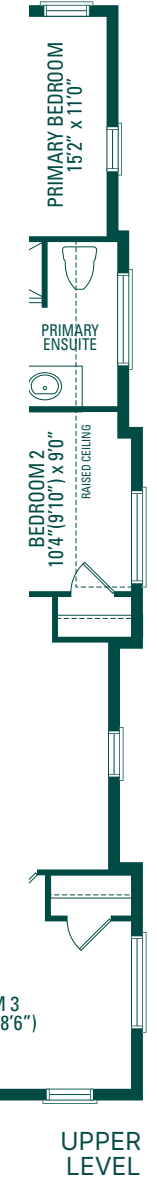
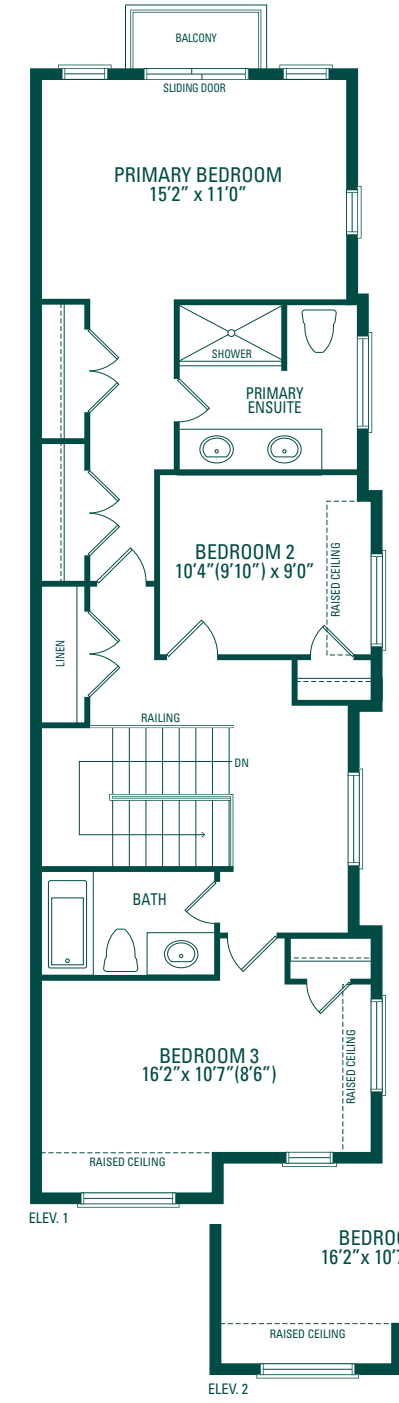


# Glen 5C



ELEV. 1  
2,411 sq. ft.

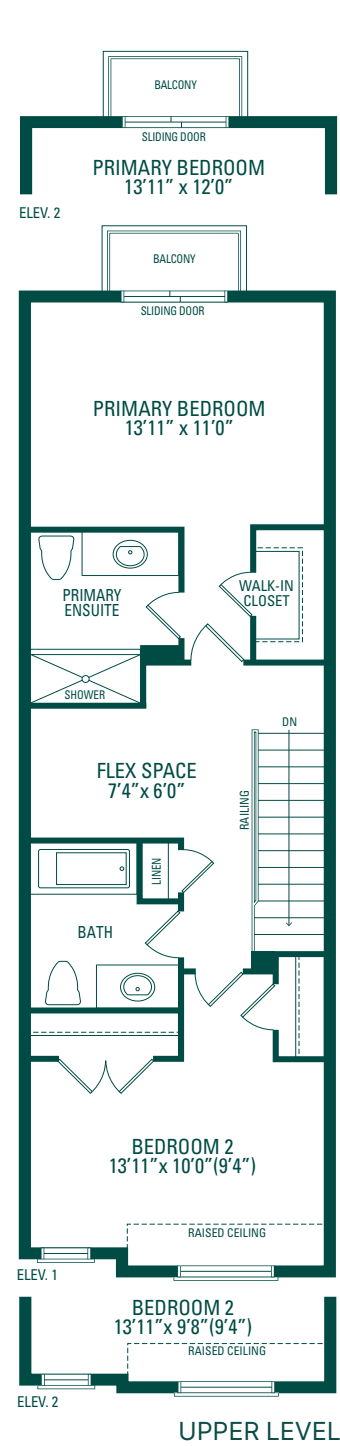
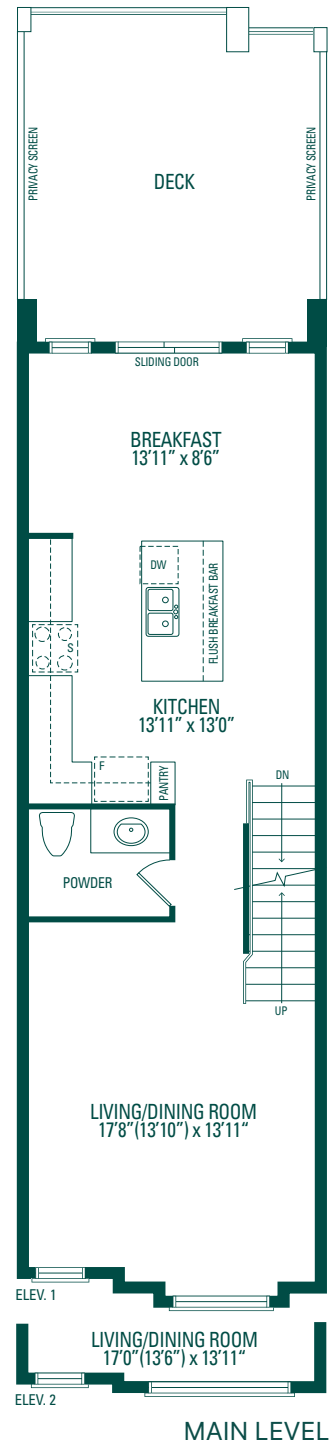
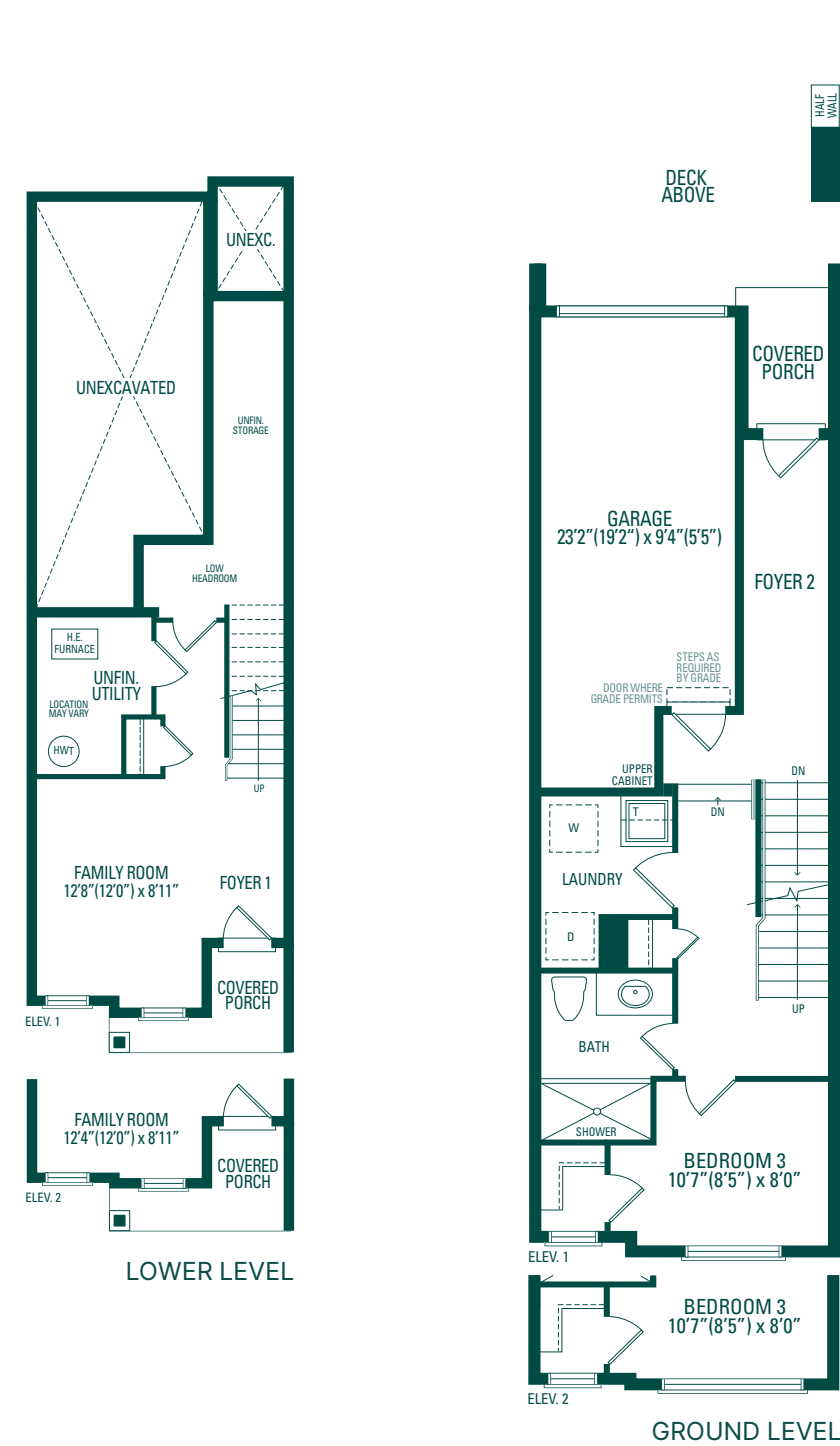
ELEV. 2  
2,419 sq. ft.



# Glen 6

ELEV. 1  
2,118 sq. ft.

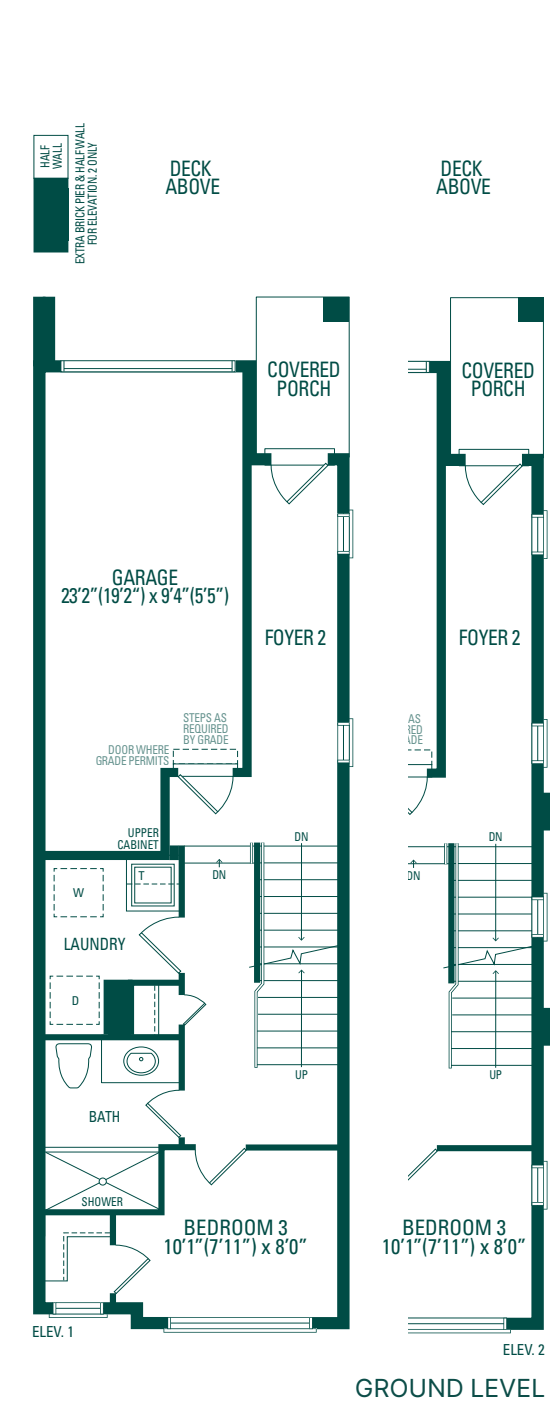
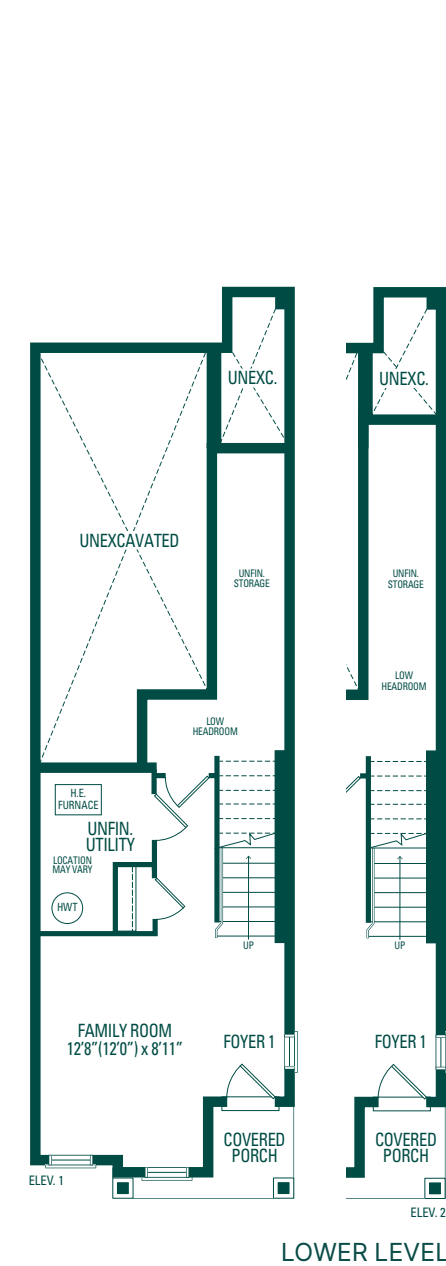
ELEV. 2  
2,121 sq. ft.



# Glen 6E

ELEV. 1  
2,143 sq. ft.

ELEV. 2  
2,143 sq. ft.



Orientation of home may be reversed and purchaser agrees to accept the same. Steps and porches may vary at any exterior entrance ways due to grading variance. Actual usable floor space may vary from the stated floor areas. All renderings are artist's concept. Dimensions, specifications and architectural detailing subject to modifications. Roofline and adjoining model types may vary due to siting. E. O. E. February 2026



Orientation of home may be reversed and purchaser agrees to accept the same. Steps and porches may vary at any exterior entrance ways due to grading variance. Actual usable floor space may vary from the stated floor areas. All renderings are artist's concept. Dimensions, specifications and architectural detailing subject to modifications. Roofline and adjoining model types may vary due to siting. E. O. E. February 2026