

# Block 62 *Maple Series*



MAPLE 2E • ELEV. 3  
2,412 sq. ft.
 MAPLE 1 • ELEV. 2  
2,139 sq. ft.
 MAPLE 1 • ELEV. 4  
2,161 sq. ft.
 MAPLE 1 • ELEV. 4  
2,161 sq. ft.
 MAPLE 1 • ELEV. 2  
2,139 sq. ft.
 MAPLE 2E • ELEV. 2  
2,412 sq. ft.



Orientation of home may be reversed and purchaser agrees to accept the same. Steps and porches may vary at any exterior entrance ways due to grading variance. Actual usable floor space may vary from the stated floor areas. All renderings are artist's concept. Dimensions, specifications and architectural detailing subject to modifications. Roofline and adjoining model types may vary due to siting. E. O. E. February 2026

# Block 63 *Maple Series*



MAPLE 2E • ELEV. 1  
2,412 sq. ft.
 MAPLE 1 • ELEV. 1  
2,139 sq. ft.
 MAPLE 1 • ELEV. 3  
2,161 sq. ft.
 MAPLE 1 • ELEV. 3  
2,161 sq. ft.
 MAPLE 1 • ELEV. 1A  
2,139 sq. ft.
 MAPLE 1 • ELEV. 1A  
2,139 sq. ft.
 MAPLE 3C • ELEV. 1  
2,685 sq. ft.



Orientation of home may be reversed and purchaser agrees to accept the same. Steps and porches may vary at any exterior entrance ways due to grading variance. Actual usable floor space may vary from the stated floor areas. All renderings are artist's concept. Dimensions, specifications and architectural detailing subject to modifications. Roofline and adjoining model types may vary due to siting. E. O. E. February 2026

# Maple 1

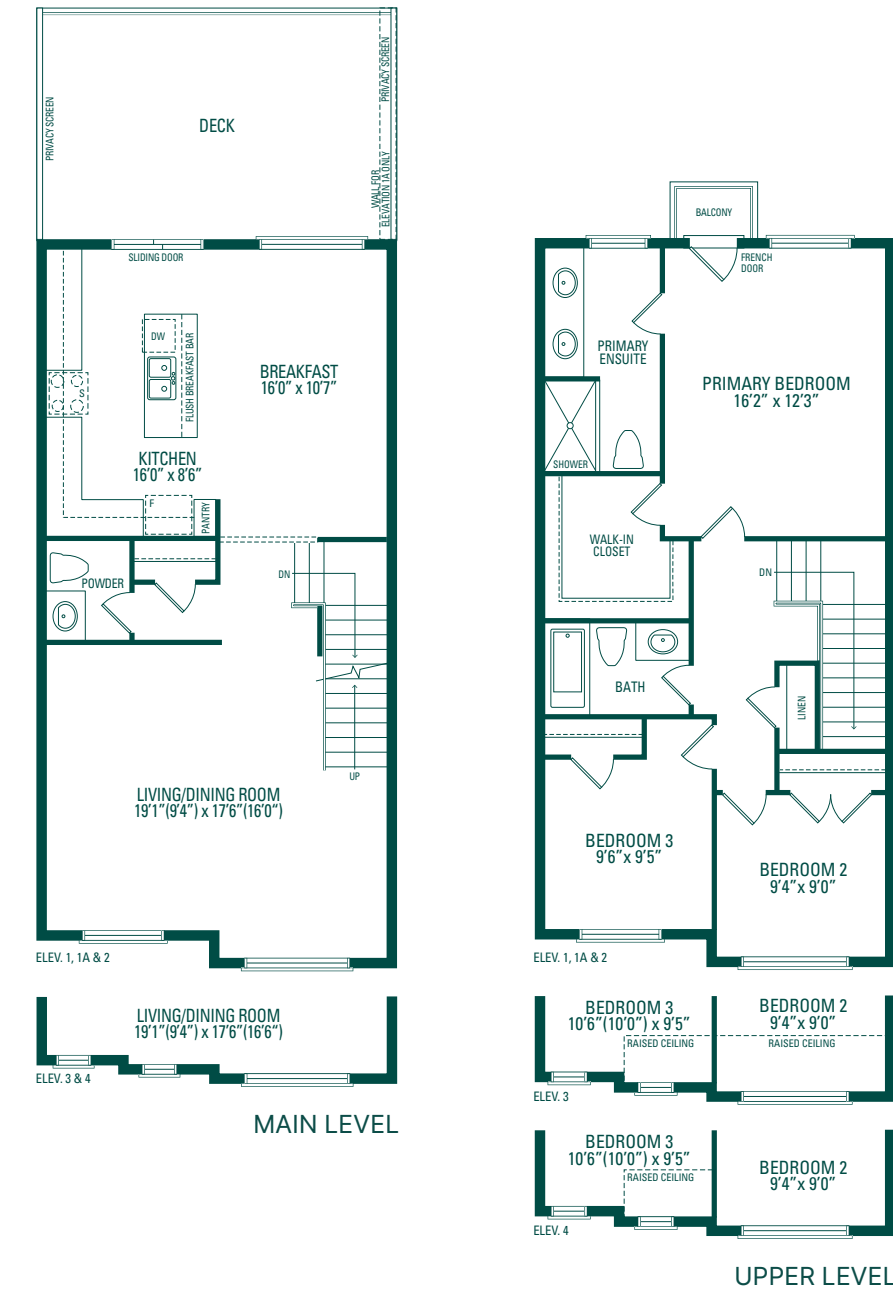
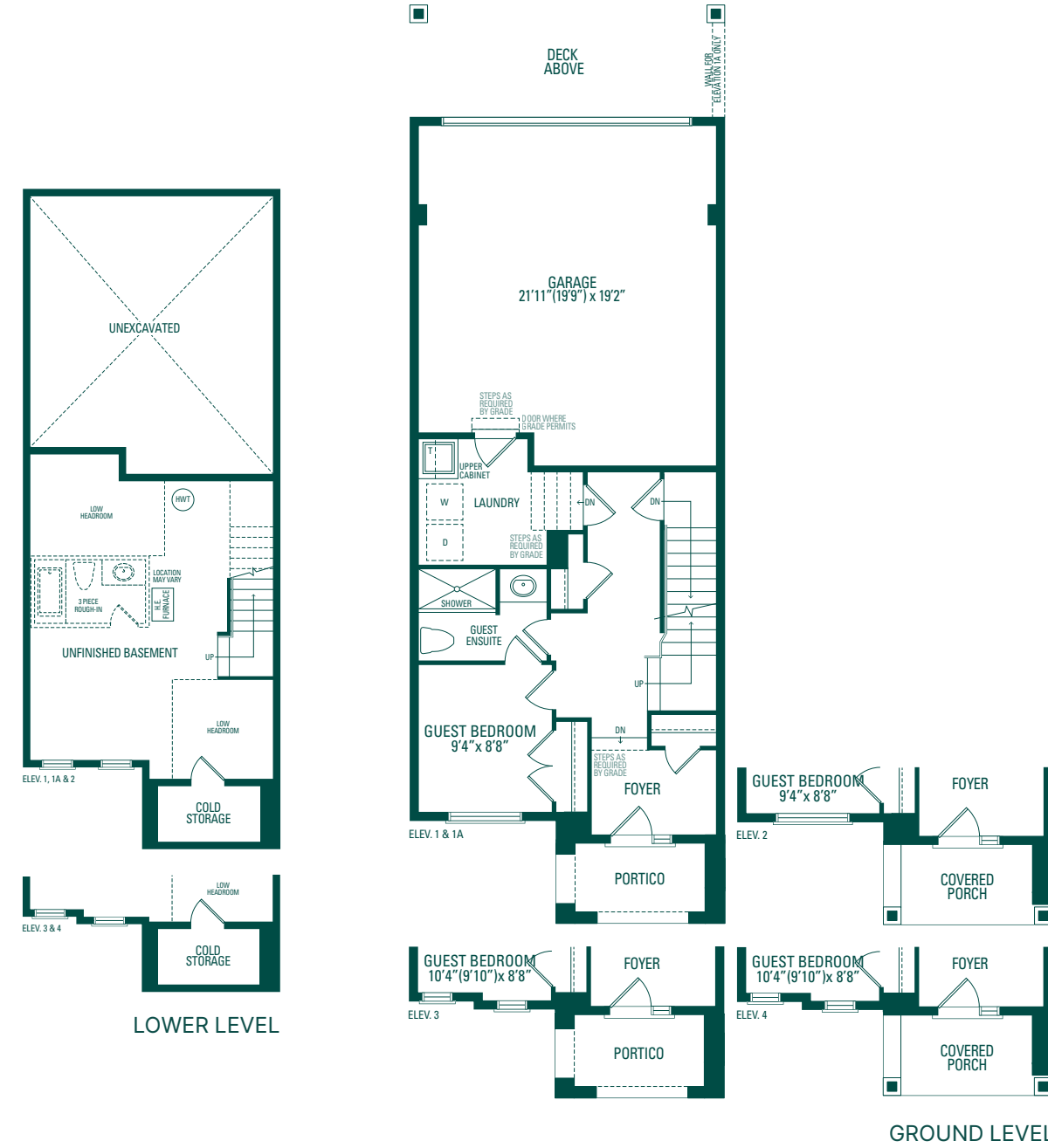
ELEV. 1  
2,139 sq. ft.

ELEV. 1A  
2,139 sq. ft.

ELEV. 2  
2,139 sq. ft.

ELEV. 3  
2,161 sq. ft.

ELEV. 4  
2,161 sq. ft.

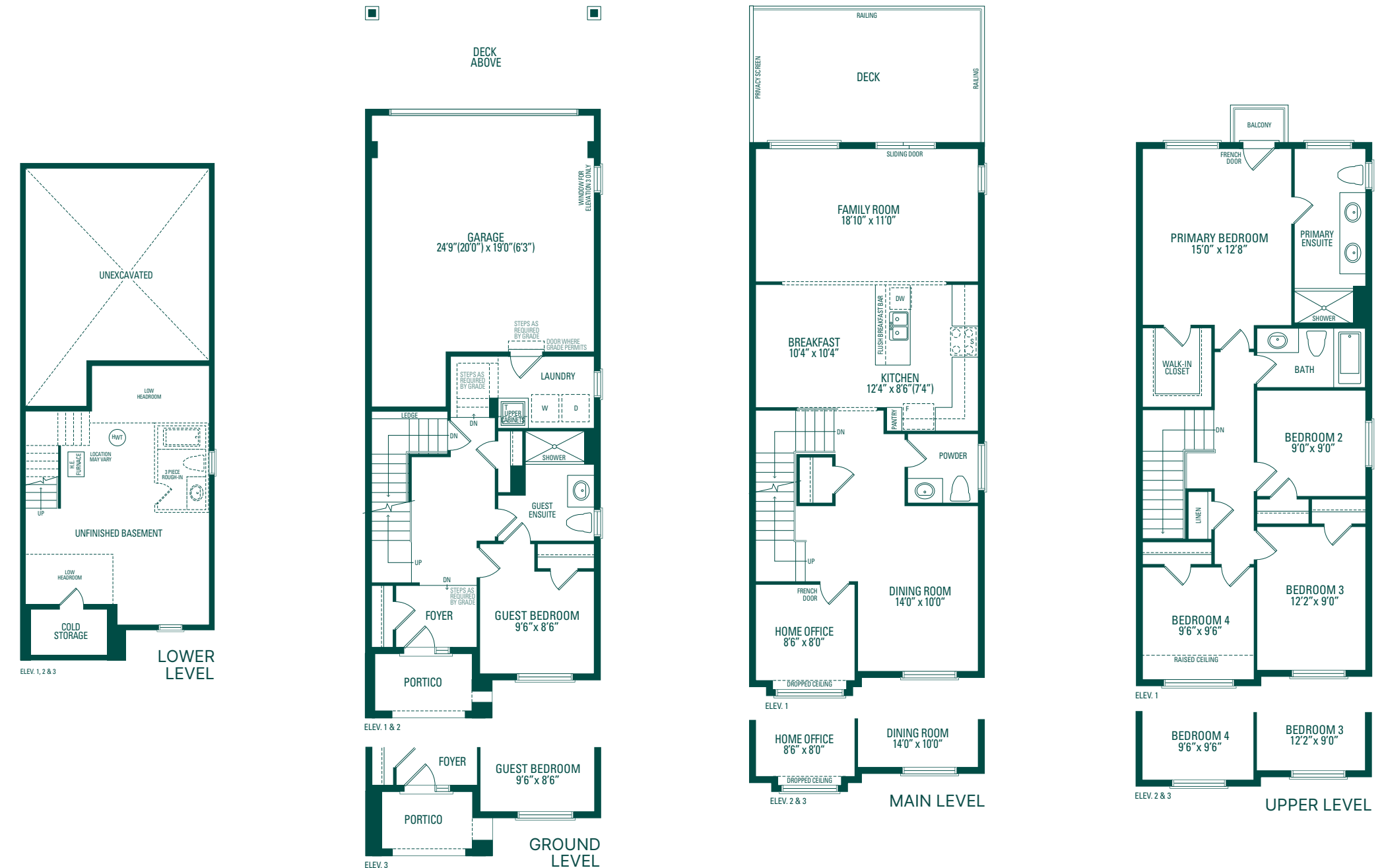


# Maple 2E

ELEV. 1  
2,412 sq. ft.

ELEV. 2  
2,412 sq. ft.

ELEV. 3  
2,412 sq. ft.



# Maple 3C

ELEV. 1  
2,685 sq. ft.

*Includes 20 sq. ft. of open area*

